

# MVSI-TS

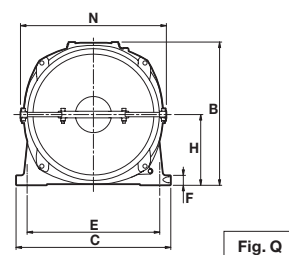
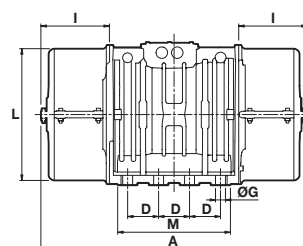
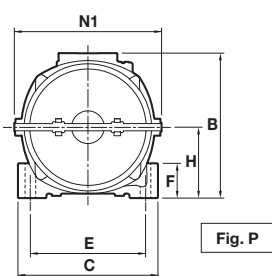
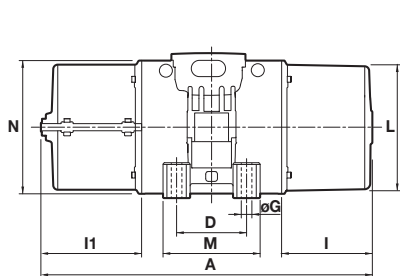


## 6 poli - 1.000/1.200 rpm

### Trifase

DESCRIZIONE				CARATTERISTICHE MECCANICHE								CARATTERISTICHE ELETTRICHE					
Codice	Tipo	Gr.	CSA*	Momento Statico kgmm		Forza centrifuga kg kN				Peso kg		Potenza ass.max W		Corrente max A		Ia/In	
				50Hz	60Hz	50Hz	60Hz	50Hz	60Hz	50Hz	60Hz	50Hz	60Hz	400V 50Hz	460V 60Hz	50Hz	60Hz
602380	MVSI 10/810-S08-TS	40	•	723	561	<b>809</b>	<b>905</b>	<b>7,94</b>	<b>8,88</b>	49,0	45,0	680	760	1,40	1,35	2,53	3,68
602381	MVSI 10/1110-S08-TS	50	•	1012	715	<b>1132</b>	<b>1151</b>	<b>11,1</b>	<b>11,3</b>	64,5	57,5	750	750	1,65	1,50	3,33	4,13
602382	MVSI 10/1400-S08-TS	50	•	1274	921	<b>1424</b>	<b>1483</b>	<b>14,0</b>	<b>14,5</b>	64,0	56,5	950	1000	1,80	1,70	3,05	3,65
602406	MVSI 10/1610-S08-TS	60	•	1464	962	<b>1638</b>	<b>1549</b>	<b>16,1</b>	<b>15,2</b>	81,0	71,0	1100	1300	2,20	2,20	4,21	4,05
602407	MVSI 10/2100-S08-TS	60	•	1927	1318	<b>2154</b>	<b>2102</b>	<b>21,1</b>	<b>20,6</b>	93,0	83,0	1500	1770	3,00	2,75	3,42	4,00
602167	MVSI 10/2610-S02-TS	70	•	2326	1720	<b>2601</b>	<b>2747</b>	<b>25,5</b>	<b>26,9</b>	131	117	1960	2100	4,10	3,75	5,35	5,60
602230	MVSI 10/3000-S02-TS	70	•	2690	1940	<b>3007</b>	<b>3124</b>	<b>29,5</b>	<b>30,6</b>	146	131	2200	2400	4,50	4,30	4,35	4,81
602154	MVSI 10/3810-S02-TS	80	•	3422	2380	<b>3826</b>	<b>3831</b>	<b>37,5</b>	<b>37,6</b>	189	171	2500	3000	5,10	5,00	5,91	6,00
602204	MVSI 10/4700-S02-TS	80	•	4206	2887	<b>4701</b>	<b>4648</b>	<b>46,1</b>	<b>46,0</b>	205	184	3200	3600	6,50	6,00	5,24	5,50
602350	MVSI 10/5150-S02-TS	80	•	/	3230	/	<b>5200</b>	/	<b>51,0</b>	/	201	/	3600	/	6,00	/	5,50
602138	MVSI 10/5200-S02-TS	90	•	4658	3288	<b>5208</b>	<b>5293</b>	<b>51,1</b>	<b>51,9</b>	239	216	3800	4000	7,00	6,50	4,71	5,08
602351	MVSI 10/5700-S02-TS	90	•	5044	3478	<b>5650</b>	<b>5650</b>	<b>55,4</b>	<b>54,9</b>	241	221	3800	4000	7,00	6,50	4,71	5,08
602091	MVSI 10/6500-S02-TS	90	•	5838	4055	<b>6527</b>	<b>6529</b>	<b>64,0</b>	<b>64,0</b>	269	259	4300	5000	8,20	8,10	4,51	5,83
602352	MVSI 10/7000-S02-TS	90	•	6272	4348	<b>7013</b>	<b>7000</b>	<b>68,8</b>	<b>68,7</b>	276	264	4300	5000	8,20	8,10	4,51	5,83
602092	MVSI 10/8000-S90-TS	95	□	7197	4967	<b>8046</b>	<b>7996</b>	<b>78,9</b>	<b>78,4</b>	316	278	7000	7500	12,6	11,3	4,59	5,58
602093	MVSI 10/9000-S90-TS	95	□	7752	5385	<b>8666</b>	<b>8669</b>	<b>85,0</b>	<b>85,0</b>	327	290	7500	8200	14,0	12,9	4,13	4,88
602137	MVSI 10/10000-S02-TS	97	□	8673	5664	<b>9695</b>	<b>9117</b>	<b>95,1</b>	<b>89,4</b>	373	333	7600	8000	13,5	12,4	4,72	4,92
602227	MVSI 10/13000-S02-TS	97	□	11510	8158	<b>12867</b>	<b>13130</b>	<b>126</b>	<b>129</b>	446	396	9600	10000	17,0	16,0	4,98	5,00
602142	MVSI 10/15000-S02-TS	105	□	12662	8700	<b>14155</b>	<b>14004</b>	<b>139</b>	<b>137</b>	644	606	10600	11270	19,0	18,0	5,88	5,78
602143	MVSI 10/17500-S02-TS	105	□	15500	10439	<b>17327</b>	<b>16804</b>	<b>170</b>	<b>165</b>	705	656	13000	13700	24,5	23,0	5,71	5,96
602244	MVSI 10/19500-S02-TS	105	□	17947	11430	<b>20062</b>	<b>18400</b>	<b>197</b>	<b>181</b>	711	661	13000	13700	24,5	23,0	5,71	5,96
602144	MVSI 10/22000-S90-TS	110	□	20025	12553	<b>22386</b>	<b>20208</b>	<b>220</b>	<b>198</b>	926	896	19000	19000	33,0	25,5	4,67	5,88
602273	MVSI 10/25000-S90-TS	110	□	22364	14785	<b>25000</b>	<b>23800</b>	<b>245</b>	<b>233</b>	960	928	19000	19000	33,0	25,5	4,67	5,88
602336	MVSI 10/30000-S02-TS	120	□	27285	18760	<b>30502</b>	<b>30200</b>	<b>299</b>	<b>296</b>	1210	1160	24000	25800	40,0	38,0	4,89	5,39

\* Momento dinamico = 2 x momento statico □ Certificazione CSA disponibile su richiesta, con cavo di alimentazione incluso.



CARATTERISTICHE DIMENSIONALI (mm)

Tipo	Fig.	A n. coperchi scomponibili		B	C	D	E	ØG	Fori		L	M	N	I1	N1	Pressacavo		
		1	2						N°	N°								
MVSI 10/810-S08-TS	P	522(50Hz) 496(60Hz)	543	246	230	140	190	17	4	45	116	134(50Hz) 108(60Hz)	207	190	225	156	258	M25x1,5
MVSI 10/1110-S08-TS	P	595	616	246	230	140	190	17	4	45	116	171	207	190	225	192	258	M25x1,5
MVSI 10/1400-S08-TS	P	641(50Hz) 595(60Hz)	662(50Hz) 616(60Hz)	246	230	140	190	17	4	45	116	194(50Hz) 171(60Hz)	207	190	225	215(50Hz) 192(60Hz)	258	M25x1,5
MVSI 10/1610-S08-TS	P	662(50Hz) 622(60Hz)	707	246	275	140	190	17	4	70	130	177(50Hz) 137(60Hz)	238	210	253	222	287	M25x1,5
MVSI 10/2100-S08-TS	P	685(50Hz) 662(60Hz)	707	246	275	140	190	17	4	70	130	200(50Hz) 177(60Hz)	238	210	253	222	287	M25x1,5
MVSI 10/2610-S02-TS	P	718	770	321	310	155	255	23,5	4	77	157	178	277	215	295	230	326	M25x1,5
MVSI 10/3000-S02-TS	P	741	770	321	310	155	255	23,5	4	77	157	201	277	215	295	230	326	M25x1,5
MVSI 10/3810-S02-TS	P	758	782	347	340	180	280	26	4	80	165	202	303	240	320	226	356	M32x1,5
MVSI 10/4700-S02-TS	P	822	848	347	340	180	280	26	4	80	165	233	303	240	320	259	356	M32x1,5
MVSI 10/5150-S02-TS	P	837(60Hz)	848(60Hz)	347	340	180	280	26	4	80	165	236	303	240	320	259	356	M32x1,5
MVSI 10/5200-S02-TS	P	818	892	370	390	200	320	28	4	90	180	192	330	270	350	266	382	M32x1,5
MVSI 10/5700-S02-TS	P	866	892	370	390	200	320	28	4	90	180	240	330	270	350	266	382	M32x1,5
MVSI 10/6500-S02-TS	P	866	892	370	390	200	320	28	4	90	180	240	330	270	350	266	382	M32x1,5
MVSI 10/7000-S02-TS	P	866	892	370	390	200	320	28	4	90	180	240	330	270	350	266	382	M32x1,5
MVSI 10/8000-S90-TS	P	896	922	395	392	200	320	28	4	100	192	255	355	270	375	281	410	M32x1,5
MVSI 10/9000-S90-TS	P	896	922	395	392	200	320	28	4	100	192	255	355	270	375	281	410	M32x1,5
MVSI 10/10000-S02-TS	P	878	894	437	460	125	380	39	6	35	215	230	387	320	414	246	450	M32x1,5
MVSI 10/13000-S02-TS	P	1017	1032	437	460	125	380	39	6	35	215	300	387	320	414	315	450	M32x1,5
MVSI 10/15000-S02-TS	P	1030	1100	526	570	140	480	45	8	41	268	200	495	510	516	270	566	M32x1,5
MVSI 10/17500-S02-TS	P	1070	1100	526	570	140	480	45	8	41	268	240	495	510	516	270	566	M32x1,5
MVSI 10/19500-S02-TS	P	1150(50Hz) 1070(60Hz)	1180(50Hz) 1100(60Hz)	526	570	140	480	45	8	41	268	280(50Hz) 240(60Hz)	495	510	516	310(50Hz) 270(60Hz)	566	M32x1,5
MVSI 10/22000-S90-TS	P	1175	1200	607	610	140	520	45	8	38	297	298	542	510	582	323	616	M32x1,5
MVSI 10/25000-S90-TS	P	1175	1200	607	610	140	520	45	8	38	297	298	542	510	582	323	616	M32x1,5
MVSI 10/30000-S02-TS	Q	/	1205	649	700	140	600	45	8	45	320	/	/	510	/	310	660	M32x1,5

la/ln = rapporto fra corrente di avviamento e corrente max.  
Sono disponibili anche altri interessi di fissaggio, contattare il servizio vendite di Italvibras.