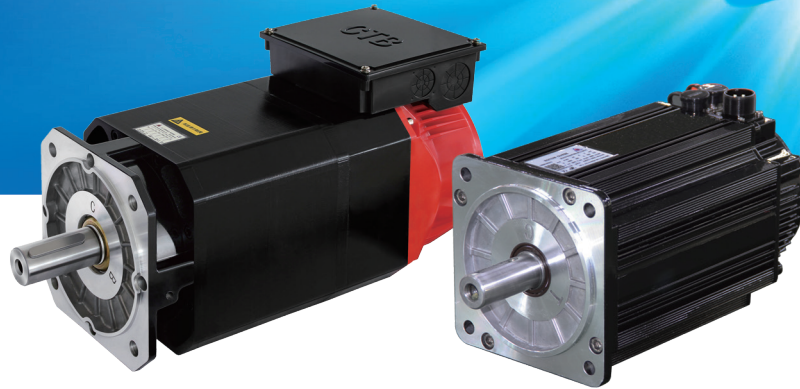




S18 PERMANENT MAGNET SYNCHRONOUS SERVO MOTOR

(1 ~ 245N.m)



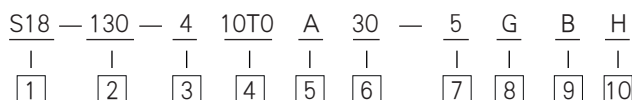
超同步股份有限公司
CTB Co., Ltd.

S18 series servo spindle motor, which is developed, designed and produced by CTB, is a new type of AC permanent magnet synchronous servo motor with international advanced level which is making it go international. It has high performance, compact structure, good shape and high cost-performance, which is widely used in every field of industrial automatic control.

Various Products Items

- ◆ Torque range: 1~245N.m, overload ability 3~5 times.
- ◆ Rated speed: 1500~3000rpm, non-stand design available
- ◆ Voltage class: 200V, 400V
- ◆ Speed sensor: with built-in encoder(incremental encoder,rotary transformer, absolute encoder, etc)W

Type Explanation (take 10n.m servo motor for example)



Model	Name	Description	Catalog Number Explanation
1	Plant Code	S18: Plant Motor Code	S18 Series Pmsm
2	Frame Size Code	Flange Size: 90~265	130×130
3	Voltage Class	2: 200V Class 4: 400V Class	400V Class
4	Torque Code	See Standard Specification Table	10 N·m
5	Encoder Code	Code Encoder Type B: without encoder G: optical-electricity encoder(incremental) S: sin-cos encoder(2048P) R: rotary transformer(12B) A: absolute encoder(17B)	Buit-in Absolute Encoder
6	Rated Speed Code	Code Rated Speed r/min Code Rated Speed r/min d5 50 10 1000 01 100 15 1500 02 200 20 2000 03 300 25 2500 05 500 30 3000 07 750	Basic Speed: 3000 r/min
7	Installation Method Code	3: B3/ Horizontal-Mounted 5: B5/ flanged mounting 35: B35/ horizontally-flanged mounting	Flange Mounting
8	Shaft Extension Structure Code	G: Plain Shaft J: Key Slot Shaft	Plain Shaft
9	Brake	B: Dead Electricity Electromagnet Brake	Have Brake
10	Rotary Interia	H: Low Interia Series	Low Interia

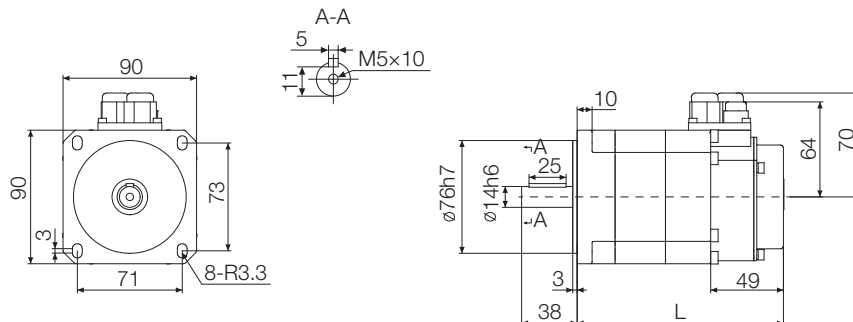
Applying Area

CNC Machine Tool Hydraulic Equipment Forging And Pressing Equipment Plastic Equipment Shearing Equipment Hoisting Equipment
 Oil Extraction Equipment Amusement Equipment Textile Equipment Papermaking Equipment Wire Cable Equipment Wood-Working
 Machine Printing Machine Packing Machine Automatic Production line Steel Production line Wire Drawing Machine Elevator
 Auto-Door Electromobile





◆ Shape and installation size

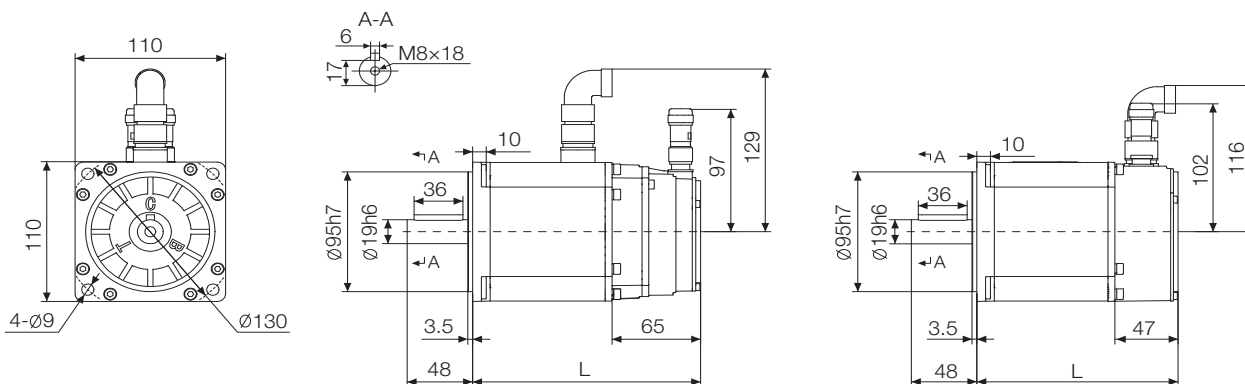


◆ S18-090 Middle Interia 90×90 mm

Voltage Class: 200V Max. Speed: 3000rpm Poles: 8p Cooling Method: Natural Cooling

Motor Model	Rated Torque (N.m)	Rated Speed (r/min)	Rated Current (A)	Rated Power (kW)	Back EMF Constant K_e (V/krpm)	Rotary Interia (With Brake) ($\times 10^{-4}$ kg.m ²)	Weight (With Brake) (kg)	L (With Brake) (mm)
S18-090-201T0X30-5XX	1	3000	1.3	0.3	48.7	1.9 (2.0)	3.6(3.9)	139
S18-090-202T0X30-5XX	2	3000	2.6	0.6	50.1	2.9 (3.0)	5.0(5.3)	158
S18-090-203T0X30-5XX	3	3000	3.9	0.9	51.2	3.9 (4.0)	6.3(6.6)	177

◆ Shape and installation size



◆ S18-110 Middle Interia 110×110 mm

Voltage Class: 200V Max. Speed: 3000rpm Poles: 8p Cooling Method: Natural Cooling

Motor Model	Rated Torque (N.m)	Rated Speed (r/min)	Rated Current (A)	Rated Power (kW)	Back EMF Constant K_e (V/krpm)	Rotary Interia (With Brake) ($\times 10^{-4}$ kg.m ²)	Weight (With Brake) (kg)	L (With Brake) (mm)
S18-110-202T0X30-5XX	2	3000	3.3	0.6	40.2	4.7 (5.4)	3.8(5.2)	155 (170)
S18-110-203T0X30-5XX	3	3000	3.8	0.9	53.1	6.8 (7.5)	4.6(6.0)	169 (183)
S18-110-204T0X30-5XX	4	3000	4.7	1.3	56.8	8.9 (9.6)	5.3(6.7)	183 (196)
S18-110-205T0X30-5XX	5	3000	5.8	1.6	56.8	11.0 (11.7)	6.1(7.5)	197 (209)
S18-110-206T0X30-5XX	6	3000	7.4	1.9	53.7	13.1 (13.8)	6.8(8.2)	211 (222)
S18-110-207T0X30-5XX	7	3000	8.4	2.2	55.0	15.2 (15.9)	7.6(9.0)	225 (235)

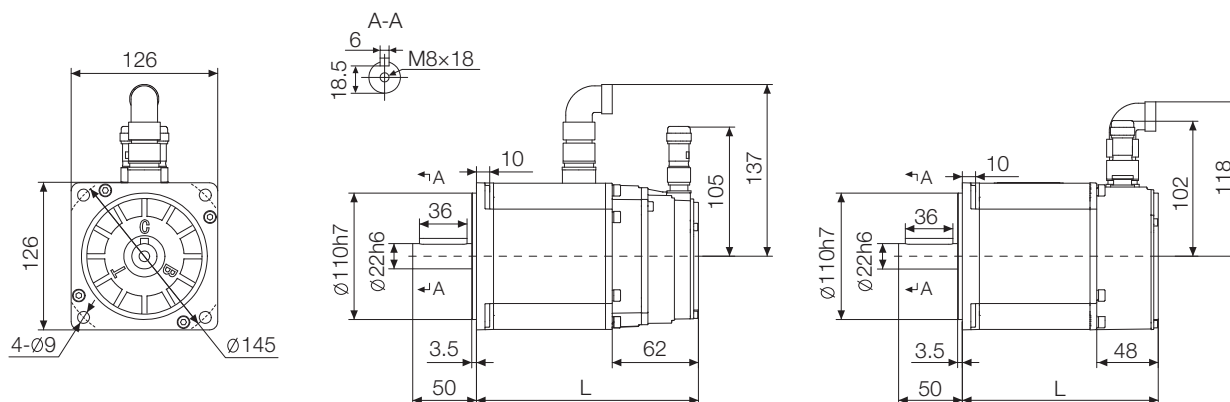


◆ S18-110 Middle Interia 110×110 mm

Voltage Class: 400V Max. Speed: 3000rpm Poles: 8p Cooling Method: Natural Cooling

Motor Model	Rated Torque (N.m)	Rated Speed (r/min)	Rated Current (A)	Rated Power (kW)	Back EMF Constant K_e (V/krpm)	Rotary Interia (With Brake) ($\times 10^{-4}$ kg.m ²)	Weight (With Brake) (kg)	L (With Brake) (mm)
S18-110-402TOX30-5XX	2	3000	1.7	0.6	80.3	4.7 (5.4)	3.8(5.2)	155 (170)
S18-110-403TOX30-5XX	3	3000	1.9	0.9	106.1	6.8 (7.5)	4.6(6.0)	169 (183)
S18-110-404TOX30-5XX	4	3000	2.4	1.3	113.5	8.9 (9.6)	5.3(6.7)	183 (196)
S18-110-405TOX30-5XX	5	3000	2.9	1.6	113.5	11.0 (11.7)	6.1(7.5)	197 (209)
S18-110-406TOX30-5XX	6	3000	3.7	1.9	107.4	13.1 (13.8)	6.8(8.2)	211 (222)
S18-110-407TOX30-5XX	7	3000	4.2	2.2	110.0	15.2 (15.9)	7.6(9.0)	225 (235)

◆ Shape and installation size



◆ S18-126 Middle Interia 126×126 mm

Voltage Class: 200V Max. Speed: 1500rpm Poles: 8p Cooling Method: Natural Cooling

Motor Model	Rated Torque (N.m)	Rated Speed (r/min)	Rated Current (A)	Rated Power (kW)	Back EMF Constant K_e (V/krpm)	Rotary Interia (With Brake) ($\times 10^{-4}$ kg.m ²)	Weight (With Brake) (kg)	L (With Brake) (mm)
S18-126-204TOX15-5XX	4	1500	2.8	0.6	92.1	8.7(10.2)	5.5(7.6)	163 (184)
S18-126-206TOX15-5XX	6	1500	3.6	0.9	110.5	12.9(14.4)	6.8(8.9)	181 (202)
S18-126-208TOX15-5XX	8	1500	5.0	1.3	106.8	17.1(18.6)	8.2(10.3)	199 (220)
S18-126-210TOX15-5XX	10	1500	6.4	1.6	105.9	21.3(22.8)	9.5(11.6)	217 (238)
S18-126-212TOX15-5XX	12	1500	7.2	1.9	110.5	25.5(27.0)	10.9(13.0)	235 (256)
S18-126-214TOX15-5XX	14	1500	8.6	2.2	107.5	29.7(31.2)	12.2(14.3)	253 (274)

◆ S18-126 Middle Interia 126×126 mm

Voltage Class: 200V Max. Speed: 3000rpm Poles: 8p Cooling Method: Natural Cooling

Motor Model	Rated Torque (N.m)	Rated Speed (r/min)	Rated Current (A)	Rated Power (kW)	Back EMF Constant K_e (V/krpm)	Rotary Interia (With Brake) ($\times 10^{-4}$ kg.m ²)	Weight (With Brake) (kg)	L (With Brake) (mm)
S18-126-204TOX30-5XX	4	3000	5.6	1.3	46.0	8.7(10.2)	5.5(7.6)	163 (184)
S18-126-206TOX30-5XX	6	3000	7.2	1.9	55.3	12.9(14.4)	6.8(8.9)	181 (202)
S18-126-208TOX30-5XX	8	3000	10.0	2.5	53.4	17.1(18.6)	8.2(10.3)	199 (220)
S18-126-210TOX30-5XX	10	3000	12.8	3.1	52.9	21.3(22.8)	9.5(11.6)	217 (238)
S18-126-212TOX30-5XX	12	3000	14.4	3.8	55.3	25.5(27.0)	10.9(13.0)	235 (256)
S18-126-214TOX30-5XX	14	3000	17.2	4.4	53.7	29.7(31.2)	12.2(14.3)	253 (274)



◆ **S18-126 Middle Interia 126×126 mm**

Voltage Class: 400V Max. Speed: 1500rpm Poles: 8p Cooling Method: Natural Cooling

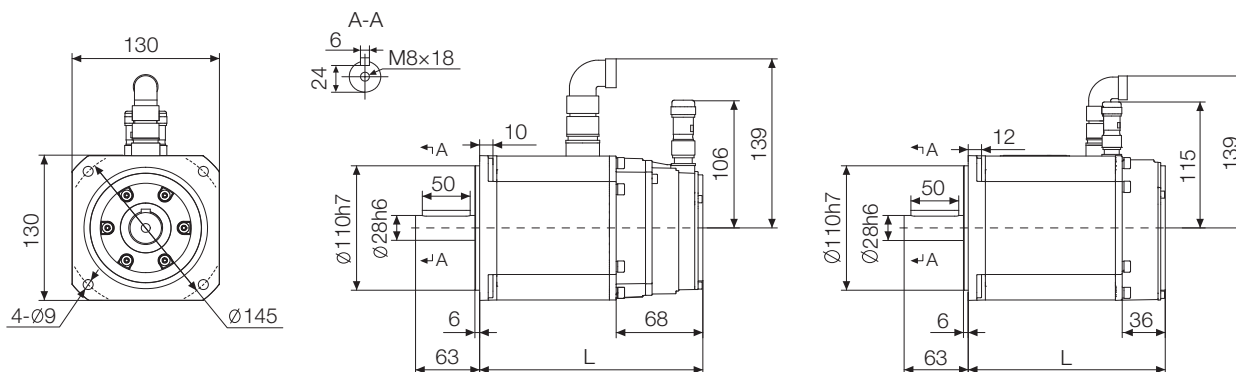
Motor Model	Rated Torque (N.m)	Rated Speed (r/min)	Rated Current (A)	Rated Power (kW)	Back EMF Constant K_e (V/krpm)	Rotary Interia (With Brake) ($\times 10^{-4}$ kg.m ²)	Weight (With Brake) (kg)	L (With Brake) (mm)
S18-126-404T0X15-5XX	4	1500	1.4	0.6	184.2	8.7(10.2)	5.5(7.6)	163 (184)
S18-126-406T0X15-5XX	6	1500	1.8	0.9	221.1	12.9(14.4)	6.8(8.9)	181 (202)
S18-126-408T0X15-5XX	8	1500	2.5	1.3	213.7	17.1(18.6)	8.2(10.3)	199 (220)
S18-126-410T0X15-5XX	10	1500	3.2	1.6	211.8	21.3(22.8)	9.5(11.6)	217 (238)
S18-126-412T0X15-5XX	12	1500	3.6	1.9	221.0	25.5(27.0)	10.9(13.0)	235 (256)
S18-126-414T0X15-5XX	14	1500	4.3	2.2	214.9	29.7(31.2)	12.2(14.3)	253 (274)

◆ **S18-126 Middle Interia 126×126 mm**

Voltage Class: 400V Max. Speed: 3000rpm Poles: 8p Cooling Method: Natural Cooling

Motor Model	Rated Torque (N.m)	Rated Speed (r/min)	Rated Current (A)	Rated Power (kW)	Back EMF Constant K_e (V/krpm)	Rotary Interia (With Brake) ($\times 10^{-4}$ kg.m ²)	Weight (With Brake) (kg)	L (With Brake) (mm)
S18-126-404T0X30-5XX	4	3000	2.8	1.3	92.1	8.7(10.2)	5.5(7.6)	163 (184)
S18-126-406T0X30-5XX	6	3000	3.6	1.9	110.5	12.9(14.4)	6.8(8.9)	181 (202)
S18-126-408T0X30-5XX	8	3000	5.0	2.5	106.8	17.1(18.6)	8.2(10.3)	199 (220)
S18-126-410T0X30-5XX	10	3000	6.4	3.1	105.9	21.3(22.8)	9.5(11.6)	217 (238)
S18-126-412T0X30-5XX	12	3000	7.2	3.8	110.5	25.5(27.0)	10.9(13.0)	235 (256)
S18-126-414T0X30-5XX	14	3000	8.6	4.4	107.5	29.7(31.2)	12.2(14.3)	253 (274)

◆ **Shape and installation size**



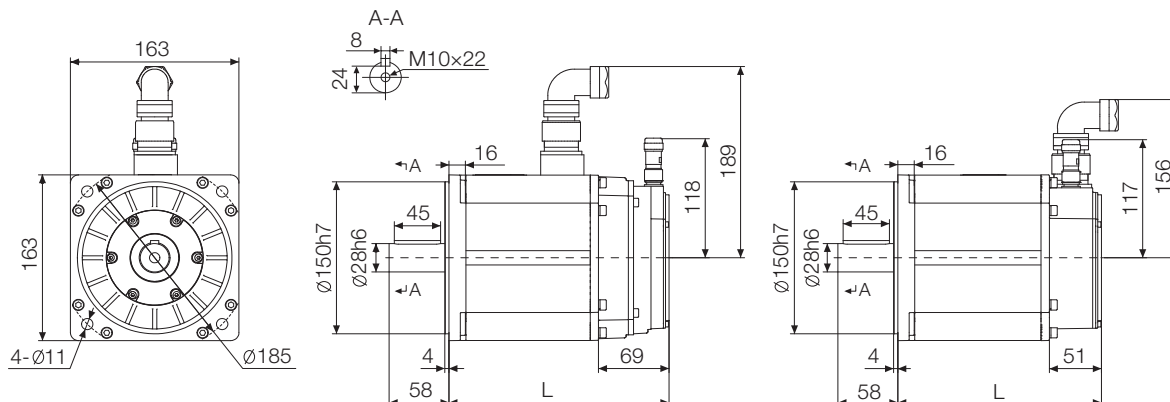
◆ **S18-130 Low Interia 130×130 mm**

Voltage Class: 400V Max. Speed: 5000rpm Poles: 8p Cooling Method: Natural Cooling

Motor Model	Rated Torque (N.m)	Rated Speed (r/min)	Rated Current (A)	Rated Power (kW)	Back EMF Constant K_e (V/krpm)	Rotary Interia (With Brake) ($\times 10^{-4}$ kg.m ²)	Weight (With Brake) (kg)	L (With Brake) (mm)
S18-130-405T0X30-5XXH	5	3000	4.7	1.6	66.8	3.7 (5.4)	6.8(8.8)	145 (176)
S18-130-410T0X30-5XXH	10	3000	9.3	3.1	67.6	6.8 (8.5)	10.3(12.3)	185(216)
S18-130-413T0X30-5XXH	13	3000	12.8	4.1	63.6	9.9 (11.6)	13.7(15.7)	225(256)
S18-130-416T0X30-5XXH	16	3000	15.3	5.0	66.0	13.1 (14.7)	17.1(19.0)	265(296)



◆ Shape and installation size

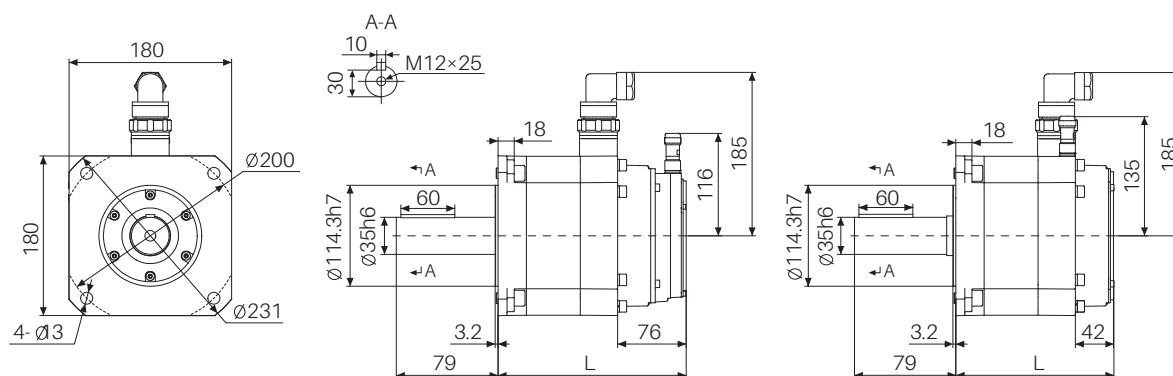


◆ S18-163 Middle Interia 163×163 mm

Voltage Class: 400V Max. Speed: 3000rpm Poles: 8p Cooling Method: Natural Cooling

Motor Model	Rated Torque (N.m)	Rated Speed (r/min)	Rated Current (A)	Rated Power (kW)	Back EMF Constant K_e (V/krpm)	Rotary Interia (With Brake) ($\times 10^{-4}$ kg.m ²)	Weight (With Brake) (kg)	L (With Brake) (mm)
S18-163-410T0X15-5XX	10	1500	5.6	1.6	113.3	36.1 (39.2)	12.0 (16.2)	198 (214)
S18-163-415T0X15-5XX	15	1500	8.5	2.4	112.0	52.7 (55.8)	14.7 (18.9)	221 (237)
S18-163-420T0X15-5XX	20	1500	11.2	3.1	113.3	69.2 (72.4)	17.5 (21.7)	244 (260)
S18-163-425T0X15-5XX	25	1500	14.2	3.9	111.0	85.7 (89.0)	20.2 (24.4)	267 (283)
S18-163-430T0X15-5XX	30	1500	17.4	4.7	108.9	102.2 (105.6)	23.0 (27.2)	290 (306)
S18-163-435T0X15-5XX	35	1500	20.8	5.5	105.9	118.7 (122.2)	25.9 (30.1)	313 (329)

◆ Shape and installation size



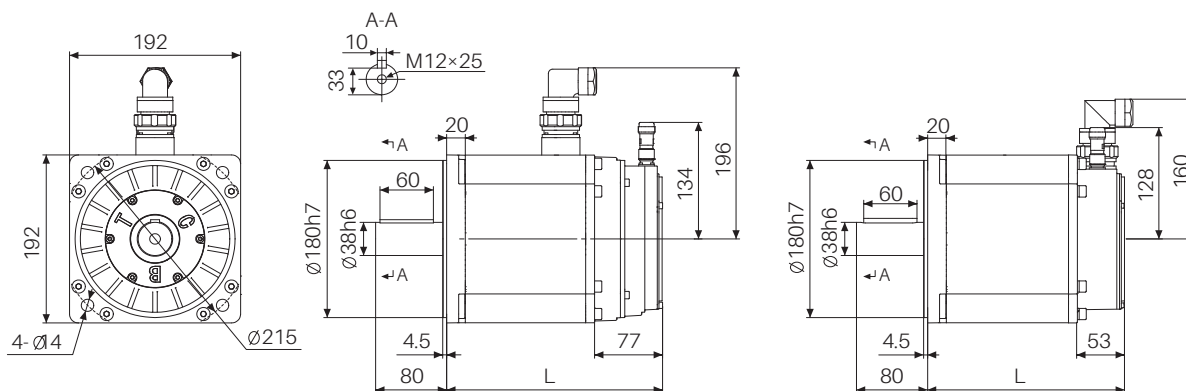
◆ S18-180 Low Interia 180×180 mm

Voltage Class: 400V Max. Speed: 3000rpm Poles: 8p Cooling Method: Natural Cooling

Motor Model	Rated Torque (N.m)	Rated Speed (r/min)	Rated Current (A)	Rated Power (kW)	Back EMF Constant K_e (V/krpm)	Rotary Interia (With Brake) ($\times 10^{-4}$ kg.m ²)	Weight (With Brake) (kg)	L (With Brake) (mm)
S18-180-418T5X15-5XXH	18.5	1500	11.9	2.9	98.0	40.3 (44.1)	17.8 (22.8)	183 (219)
S18-180-428T5X15-5XXH	28.5	1500	16.3	4.4	109.3	58.3 (62.1)	23.1 (28.1)	213 (249)
S18-180-435T0X15-5XXH	35	1500	20.8	5.5	105.3	76.3 (80.1)	28.3 (33.3)	243 (279)
S18-180-448T0X15-5XXH	48	1500	25.7	7.5	116.7	112.3 (116.1)	38.6 (43.6)	303 (339)



◆ Shape and installation size



◆ S18-192 Middle Interia 192×192 mm

Voltage Class: 400V Max. Speed: 1500rpm Poles: 8p Cooling Method: Natural Cooling

Motor Model	Rated Torque (N.m)	Rated Speed (r/min)	Rated Current (A)	Rated Power (kW)	Back EMF Constant K_e (V/krpm)	Rotary Interia (With Brake) ($\times 10^{-4}$ kg.m ²)	Weight (With Brake) (kg)	L (With Brake) (mm)
S18-192-416TOX15-5XX	16	1500	4.9	2.5	207.4	77.9(81.3)	19.4(26.5)	222 (243)
S18-192-424TOX15-5XX	24	1500	7.5	3.8	201.8	113.2(116.6)	24.0(31.1)	248 (269)
S18-192-432TOX15-5XX	32	1500	9.5	5.0	213.0	148.5(151.9)	28.7(35.8)	274 (295)
S18-192-440TOX15-5XX	40	1500	11.2	6.3	224.3	183.8(187.2)	33.3(40.4)	300 (321)
S18-192-448TOX15-5XX	48	1500	13.8	7.5	218.7	219.1(222.5)	37.8(44.9)	326 (347)
S18-192-456TOX15-5XX	56	1500	17.1	8.8	206.0	254.4(257.8)	42.4(49.5)	352 (373)

◆ S18-192 Low Interia 192×192 mm

Voltage Class: 400V Max. Speed: 3000rpm Poles: 8p Cooling Method: Natural Cooling

Motor Model	Rated Torque (N.m)	Rated Speed (r/min)	Rated Current (A)	Rated Power (kW)	Back EMF Constant K_e (V/krpm)	Rotary Interia (With Brake) ($\times 10^{-4}$ kg.m ²)	Weight (With Brake) (kg)	L (With Brake) (mm)
S18-192-416TOX15-5XXH	16	1500	9.2	2.5	109.3	43.5(47.7)	19.4(26.5)	222 (245)
S18-192-424TOX15-5XXH	24	1500	13.4	3.8	111.6	62.0(66.2)	24.0(31.1)	248 (271)
S18-192-432TOX15-5XXH	32	1500	17.2	5.0	116.3	80.5(84.7)	28.7(35.8)	274 (297)
S18-192-440TOX15-5XXH	40	1500	22.4	6.3	113.4	99.0(103.2)	33.3(40.4)	300 (323)
S18-192-448TOX15-5XXH	48	1500	26.8	7.5	111.6	117.5(121.7)	37.8(44.9)	326 (349)
S18-192-456TOX15-5XXH	56	1500	33.0	8.8	105.8	136.0(140.2)	42.4(49.5)	352 (375)



◆ S18-165 Middle Interia 165×165 mm

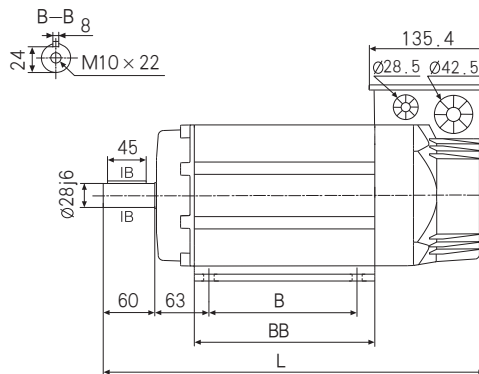
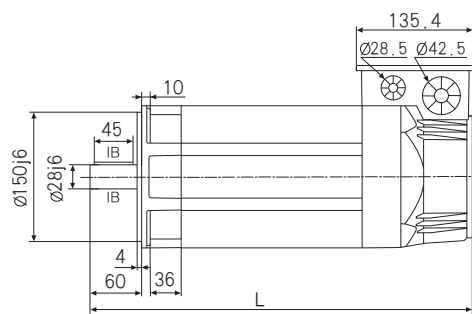
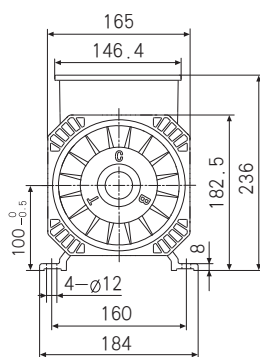
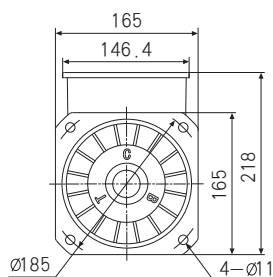
Voltage Class: 400V Max. Speed: 3000rpm Poles: 8p
 Cooling Method: Fan Cooling Fan Power: 25W Fan Voltage: 380V

Motor Model	Rated Power (N.m)	Rated Speed (r/min)	Rated Current (A)	Rated Power (kW)	Back EMF Constant K_e (V/krpm)	Rotary Interia ($\times 10^{-4}$ kg.m ²)	Weight (kg)	B (mm)	BB (mm)	L (mm)
S18-165-416T0X15-XXX	15	1500	8.4	2.4	113.0	36.1	14.0	45	80	315
S18-165-422T0X15-XXX	22	1500	12.4	3.5	112.0	52.7	16.0	70	103	338
S18-165-435T0X15-XXX	35	1500	20.0	5.5	111.0	85.7	22.0	112	149	384
S18-165-448T0X15-XXX	48	1500	28.5	7.5	105.9	118.7	29.0	159	195	430

◆ Performance Index

Item	Index
Encoder (Optional)	CE9-2500(Incremental)
	RZ12-1024(Rotary)
	SC-2048(SIN -COS)
Shaft Type	G: OPTICAL SHAFT
	J: WITH KEY SLOT
Installing Method	B3 B5 B35
Cooling Method	Forced air cooling
Protection Class	IP55
Insulation Class	F CLASS
Rated Temperature Rise	90 K
Vibration Class	S
Noise	≤ 70 dB(A)
Environment Temperature	-15~45°C
ENVIRONMENT HUMIDITY	$\leq 95\%$ RH

◆ Shape And Installation Size





◆ S18-205 Middle Interia 205×205 mm

Voltage Class: 400V Max. Speed: 1500rpm Poles: 8p
 Cooling Method: Fan Cooling Fan Power: 25W Fan Voltage: 380V

Motor Model	Rated Power (N.m)	Rated Speed (r/min)	Rated Current (A)	Rated Power (kW)	Back EMF Constant K_e (V/krpm)	Rotary Interia ($\times 10^{-4}$ kg.m ²)	Weight (kg)	B (mm)	BB (mm)	L (mm)
S18-205-442T0X15-XXX	42	1500	12.5	6.6	213.0	148.0	40.0	73	145	450
S18-205-460T0X15-XXX	60	1500	17.3	9.4	218.7	219.0	48.0	128	197	502
S18-205-472T0X15-XXX	72	1500	21.9	11.3	206.0	254.0	54.0	178	223	528
S18-205-496T0X15-XXX	96	1500	28.0	15.1	214.4	334.0	64.0	208	275	580

◆ S18-205 Low Interia 205×205 mm

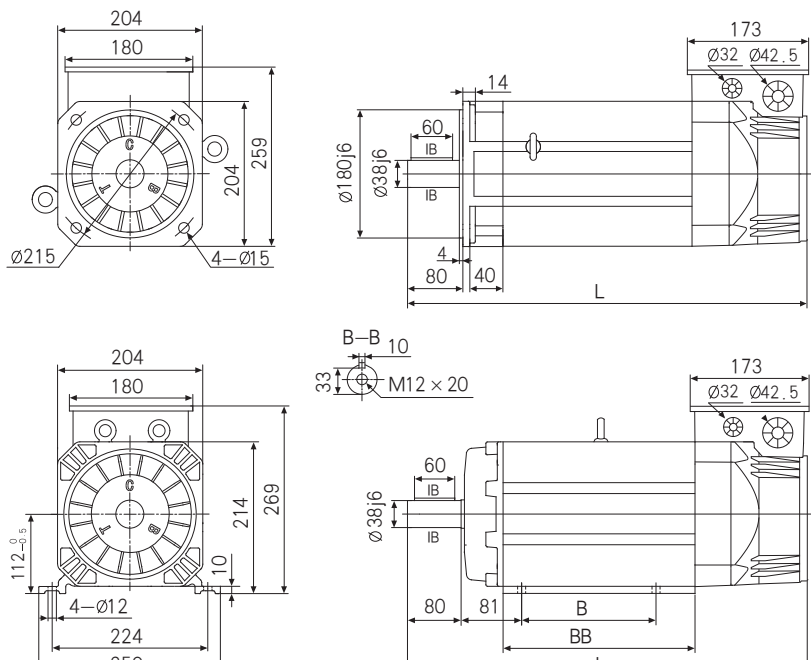
Voltage Class: 400V Max. Speed: 3000rpm Poles: 8p
 Cooling Method: Fan Cooling Fan Power: 25W Fan Voltage: 380V

Motor Model	Rated Power (N.m)	Rated Speed (r/min)	Rated Current (A)	Rated Power (kW)	Back EMF Constant K_e (V/krpm)	Rotary Interia ($\times 10^{-4}$ kg.m ²)	Weight (kg)	B (mm)	BB (mm)	L (mm)
S18-205-442T0X15-XXH	42	1500	22.5	6.6	116.3	80.5	38.0	73	145	450
S18-205-460T0X15-XXH	60	1500	33.5	9.4	111.6	117.5	46.0	128	197	502
S18-205-472T0X15-XXH	72	1500	42.4	11.3	105.8	136.0	50.0	178	223	528
S18-205-496T0X15-XXH	96	1500	54.5	15.1	109.9	173.0	58.0	208	275	580

◆ Performance Index

Item	Index
Encoder (Optional)	CE9-2500(Incremental)
	RZ12-1024(Rotary)
	SC-2048(SIN -COS)
Shaft Type	G: OPTICAL SHAFT
	J: WITH KEY SLOT
Installing Method	B3 B5 B35
Cooling Method	Forced air cooling
Protection Class	IP55
Insulation Class	F CLASS
Rated Temperature Rise	90 K
Vibration Class	S
Noise	≤70dB(A)
Environment Temperature	-15~45°C
ENVIRONMENT HUMIDITY	≤95%RH

◆ Shape And Installation Size





◆ S18-265 Low Inertia 265×265 mm

Voltage Class: 400V Max. Speed: 1500rpm Poles: 8p
Cooling Method: Fan Cooling Fan Power: 25W Fan Voltage: 380V

Motor Model	Rated Power (N.m)	Rated Speed (r/min)	Rated Current (A)	Rated Power (kW)	Back EMF Constant K_e (V/krpm)	Rotary Inertia ($\times 10^{-4}$ kg.m ²)	Weight (kg)	B (mm)	BB (mm)	L (mm)
S18-265-4125TX15-XXH	125	1500	36.8	19.6	207.4	220.0	86.0	266	396	660
S18-265-4165TX15-XXH	165	1500	48.6	25.9	211.5	280.0	102.0	316	446	710
S18-265-4205TX15-XXH	205	1500	64.0	32.2	203.3	340.0	118.0	366	496	760
S18-265-4245TX15-XXH	245	1500	75.0	38.5	195.2	410.0	132.0	416	546	810

◆ S18-265 Low Inertia 265×265 mm

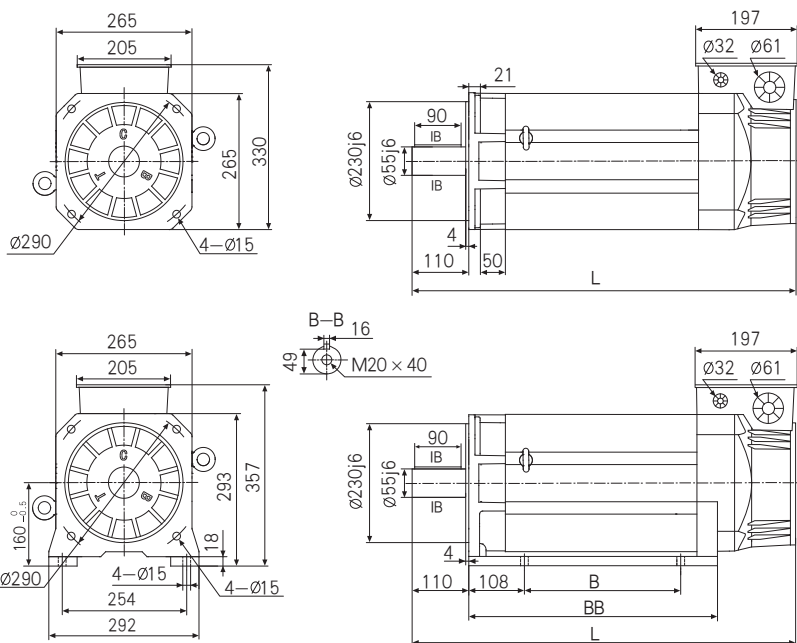
Voltage Class: 400V Max. Speed: 3000rpm Poles: 8p
Cooling Method: Fan Cooling Fan Power: 25W Fan Voltage: 380V

Motor Model	Rated Power (N.m)	Rated Speed (r/min)	Rated Current (A)	Rated Power (kW)	Back EMF Constant K_e (V/krpm)	Rotary Inertia ($\times 10^{-4}$ kg.m ²)	Weight (kg)	B (mm)	BB (mm)	L (mm)
S18-265-4125TX15-XXH	125	1500	76.8	19.6	103.7	220.0	86.0	266	396	660
S18-265-4165TX15-XXH	165	1500	99.1	25.9	105.7	280.0	102.0	316	446	710
S18-265-4205TX15-XXH	205	1500	128.0	32.2	101.7	340.0	118.0	366	496	760
S18-265-4245TX15-XXH	245	1500	159.5	38.5	97.6	410.0	132.0	416	546	810

◆ Performance Index

Item	Index
Encoder (Optional)	CE9-2500(Incremental)
	RZ12-1024(Rotary)
	SC-2048(SIN -COS)
Shaft Type	G: OPTICAL SHAFT
	J: WITH KEY SLOT
Installing Method	B3 B5 B35
Cooling Method	Forced air cooling
Protection Class	IP55
Insulation Class	F CLASS
Rated Temperature Rise	90 K
Vibration Class	S
Noise	≤70dB(A)
Environment Temperature	-15~45°C
ENVIRONMENT HUMIDITY	≤95%RH

◆ Shape And Installation Size



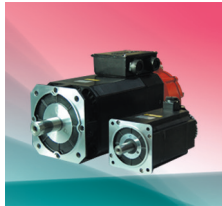
**GO BEYOND ONESELF
KEEP PACE WITH THE WORLD**



OMIN SYSTEM



CTB SERVO



CTB MOTOR

PROVIDE THE PERFECT MECHANICAL CONTROL COMBINATION



CTB

CTB Co.,Ltd.

ADD: #9 Yunxi 6 Ave Development Zone Miyun Dist Beijing China

Tel: +86 10-69076533

Fax: +86 10-69076577

Postcode: 101500

Email: sales@ctbservo.com

24 Hours Free Hotline: 400-888-9055

<http://www.ctbservo.com>

